

Excellus



Everybody
Benefits

Reduce risk and control costs with pharmacy integration.

With Excellus BlueCross BlueShield's integrated pharmacy benefits management, our self-funded groups are offered both value-added benefits, built right into the plan, and optional benefits that can be added to further reduce risk and control costs.

Our unique approach to pharmacy benefits.



Strong pharmacy benefits management

We provide national-caliber pharmacy benefits with local resources and control. Employers have the power of the largest national pharmacy benefits manager coupled with the largest regional pharmacy benefits manager to oversee all aspects of formulary management -- all with the benefit of local service and support behind our comprehensive approach to utilization management.



Real time medical and pharmacy integration

With a focus on chronic conditions and specialty drug management, our clinically based approach helps minimize avoidable utilization of costly medical services. Through discovery and prevention of drug interactions that can endanger lives, and increased medication adherence, we can help reduce hospital visits and lower inpatient admissions. That's where the value of pharmacy and medical integration really adds up.

Experience a more comprehensive approach to pharmacy care.

We offer the following programs to our self-funded groups at **no additional cost**.

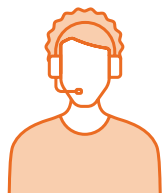
ADVANCED OPIOID MANAGEMENT PROGRAM	This program focuses on preventing abuse, addiction and overdose of opioids before they start through point-of-sale edits, physician alerts and member education.
BIOSIMILAR OPTIMIZATION	Biosimilars are an important way to help spur competition that can lower health care costs and increase access to important therapies. Excellus BlueCross BlueShield has been a national leader in biosimilars since their inception.
DIABETES REMOTE MONITORING	Members with diabetes can opt-in to have pharmacists actively monitor their blood sugar readings and offer educational support when needed to help members manage their condition and potentially prevent long-term complications.
HOME DELIVERY	Members can get maintenance medications delivered right to their front door - increasing adherence and savings over the retail pharmacy.
INSIDE RX® DISCOUNT CARDS	The Inside Rx prescription discount card provides discounts on medications outside a member's pharmacy benefit through a simple and personalized experience. It lets members and their dependents pay the lowest price possible for the medications they may need.
MEDSYNC®	Allows patients to synchronize their medications and pick up their routine prescription refills at the pharmacy on a single, convenient day each month.
PRICE ASSURE™	A seamless way for your employees to potentially save money on certain non-specialty generic drugs at the point of sale. When an employee fills a prescription at an in-network pharmacy that participates with GoodRx®, the benefit cost is automatically checked against pricing available through GoodRx, and your employee automatically receives the lower price when applicable.
QUANTITY LIMITS	Setting quantity limits ensures an appropriate amount of medication is being used for each indication by aligning the dispensed quantity of prescription medication with FDA-approved dosage guidelines.
RATIONALMED®	Addresses otherwise unidentifiable safety issues related to prescription drugs in real-time and sends safety alerts that address dangerous interactions, gaps in care, and potential misuse to dispensing pharmacists and prescribers for immediate notification and action.
SPECIALTY DRUG BENEFIT OPTIMIZATION	The goal of the program is to drive affordability by reducing spend for specialty drugs that can be converted from the medical benefit to the pharmacy benefit at a lower net cost.
SPLIT FILL	Patients try expensive medications with potentially serious side effects to confirm effectiveness and tolerance before paying for a full 30-day supply.

Make the most of your plan with benefits built around you.

In addition to the programs included with self-funded plans, Excellus BCBS medical and pharmacy integration also offers **several optional programs** to meet your needs:

DIABETES UTILIZATION MANAGEMENT	Utilization management for diabetics includes the application of prior authorization and step therapy to diabetic medications, equipment, and testing supplies under their medical benefit.
GENERIC ADVANTAGE PROGRAM	Under this program, if a member fills a brand-name medication when there is a generic equivalent available, the member will pay the difference between the generic medication and the higher cost brand, plus the generic copay.
LIMITED NETWORK¹	You and your team can save up to 2% or more on prescription drug costs, and members enjoy the same copay in our Limited Network of 43,000+ retail pharmacies.
MANDATORY MAIL²	Member's maintenance medications are delivered directly to their homes and no longer filled at a retail pharmacy. Home delivery is the most cost effective channel & increases member savings for up to a 90-day supply of maintenance medications.
MANDATORY SPECIALTY DRUG BENEFIT	Members buy costly specialty medications at a pharmacy that participates in our specialty pharmacy network, where we can achieve lower costs and experienced specialty services.
MEDICATION ASSURANCE*	A complementary program designed to reduce spend on specialty medications by holding manufacturers accountable for drugs that were approved through the FDA's Accelerated Approval program. Manufacturers of Accelerated Approval drugs that agree to participate in our Medication Assurance Program will have their Accelerated Approval FDA progress monitored. If clinical benefits are unproven, the manufacturer will pay a financial guarantee.
OUT-OF-POCKET PROTECTION PROGRAM	Through our Out-of-Pocket Protection Program, we work to maximize assistance from manufacturers on certain specialty medications, closing copay assistance loopholes in members' deductibles and out-of-pocket maximums.
PATIENT ASSURANCE PROGRAMSM	Program aimed at combating the escalating costs of diabetic and cardiovascular therapies. Members will pay no more than \$25 per 30 days for eligible drugs. Up to \$50 is provided by manufacturer assistance and in some instances a discount by the health plan. This happens immediately at the point of sale.
PHARMACY CONCIERGE**	This program focuses on controlling costs by driving appropriate utilization of medications. It's a retrospective utilization management support program that identifies and provides voluntary insights to providers. Our core value proposition is minimal disruption and guaranteed savings.

PRIOR AUTHORIZATION	Our clinical pharmacists and physicians review medication requests to ensure appropriate drugs and doses are being prescribed. Certain medications require prior approval before the medication is covered.
SAVEONSP*	Through our specialty copay assistance program, SaveOnSP we use manufacturer assistance to reduce group drug costs and member copays in some of the top specialty categories that often come with an expensive price tag.
SEMPRE HEALTH³	Sempre Health is an SMS text-based program that addresses prescription affordability and increases adherence for eligible members. The program provides a member copay incentive for filling their medication on time, each month.
SITE OF CARE*	This program provides outreach to members who are currently receiving certain infusion drugs at high-cost facilities and aids in transitioning members to home infusion or lower cost facilities. The goal is to promote member convenience and accessibility to care while lowering costs.
SMART90⁴	With Smart90 members can get their long-term maintenance medications through home delivery via Express Scripts or at a participating retail pharmacy in the Smart90 network such as CVS or Walgreens. This unique plan design motivates greater use of 90-day supplies and offers deeper discounts.
SMART RXASSIST*	The Smart RxAssist Program harnesses manufacturer programs to reduce or eliminate high out-of-pocket costs for members and at the same time, create savings for the plan.
STEP THERAPY	The step therapy program encourages the safe and cost-effective use of medications. Certain medications are not covered until one or more therapeutically equivalent medications have been tried first.



If you have more questions about pharmacy benefits for self-funded plans, please contact your dedicated account manager.

* Shared Savings Fee associated with program.

** A buy-up for self-funded groups.

¹ Cannot be combined with Mandatory Mail or Smart90.

² Cannot be combined with Smart90 or Limited Network.

³ Optional program when a group elects Pharmacy Concierge. Group must enroll in Pharmacy Concierge to be eligible.

⁴ Cannot be combined with Mandatory Mail or Limited Network.

©2024 Excellus BlueCross BlueShield, a nonprofit independent licensee of the Blue Cross Blue Shield Association.

B-8572 / 18939-24Rx

A11yCRG-050124

